

DIASHINE® 

**DIASHINE. THE BENCHMARK POLISH.  
VH TECHNOLOGIES PRODUCT CATALOG.**

Materials and products for dental restorations.

## WELCOME

Founded in 1997, VH Technologies Ltd, has served the needs of dental industry clinicians, practitioners and labs for nearly two decades.

Based in the Seattle area of the great Pacific Northwest, home of many renowned world-class businesses, this family-owned and -operated firm has expanded its local roots, reaching dental professionals across the globe. As a testament to the quality and value of their initial — and for years primary — product, DiaShine®, VH Technologies has made its mark without use of traditional advertising or marketing, but solely through peer-to-peer recommendations.

Co-owners Roland and Anthony Bonser are committed to maintaining the DiaShine product line as a shining example of offering the best there is, while continuing to respond to the ongoing needs of their clientele. In 2012 they began further increasing industry awareness of DiaShine by exhibiting for the first time at the CEREC 27.5 meeting in Las Vegas. And of course, recommendations between practitioners and technicians continue to play a major role in DiaShine's ongoing success.

So take a look at our range of products available to you here and let us know how we can help you offer better service and the best results throughout our industry.



## VH TECHNOLOGIES. HOME OF DIASHINE™

Manufactured in the United States, the DiaShine name brand has earned the respect of dental professionals across the globe, being their product of choice. We attribute this to our proprietary formula, which ensures less waste and superior results in minimal time. Polishing with DiaShine is truly a best practice whether pre- or post-glaze or, in some cases, instead of glazing. It is the time-tested product counted on by many thousands of professionals.

Of course every major company must tout its product. That's the name of the game. But we don't expect you to simply take our word for DiaShine's superiority. Take the time to see what your industry's opinion leaders have to say. It's easy to do, as DiaShine has been featured in numerous dental publications and buyer's guides. Or simply ask around. You'll find us known — and honored — throughout the industry, including by 3M™, which chose DiaShine with which to co-brand their 3M™ ESPE™ Lava™ Ultimate Restorative polishing system. Whether you're working with ceramics, resins, nano and hybrid materials or polishing chairside, the ideal diamond paste is right here.

### Edward A McLaren DDS MDC Art Oral America

*"By far the DiaShine diamond polishing system is second to none on the market today. I highly recommend it for final polishing of ceramics."*



### Karyn Halpern DMD Port Jefferson Smiles

*"DiaShine polishing pastes are a must have for any dentist. It is the best polishing paste for all of your glass ceramic and zirconia restorations. I cannot practice without it!"*



*Product testimonials were not paid for in any way.*

## The Benchmark Polish

With these 100% diamond, water-soluble formulas, you will work with less and achieve more. No need for speeds faster than 10k rpm, plus easy cleanup.



### DIASHINE SUPER FINE SOFT 3G

The finest grit of DiaShine, only to be used after Fine or Fine Soft. Best for nano and hybrid ceramics.



### DIASHINE FINE 3G

The original DiaShine with a hard binder. For a high lustre glaze-like finish.



### DIASHINE FINE SOFT 3G

Slightly softer binder & higher concentration of diamond powder. Great for composites, nano or hybrid ceramics. Can also be used in conjunction with Fine. For a high lustre glaze-like finish.



### DIASHINE MEDIUM SOFT 3G

Quick shine, helpful in taking back a glaze or over-polished restoration. Ideal for polishing Zirconia - will not create a "pearl-like" look.



### DIASHINE COARSE 3G

For smoothing the restorative surface before high luster polishing or using by itself for a more natural matte finish.



### DIASHINE COARSE SOFT 3G

For smoothing the restorative surface before high luster polishing or using by itself for a more natural matte finish. Slightly softer binder & higher concentration of diamond powder.



**DIASHINE INTRA ORAL 2G**

Fine Grit chairside DiaShine for re-polishing any type of restorative material after an adjustment.



**Jason Olitsky  
CEO - Smile Stylist**

*"I rely on DiaShine to restore all my ceramic restorations to a laboratory-like finish. We have also incorporated DiaShine into our hygiene department to give our cosmetic patients a top-level polish. Patients love that we embrace their decision to get porcelain veneers by using the best polishing paste on the market at every cleaning appointment."*



**Bill Marais RDT  
Disa Dental Studio**

*"DiaShine is the best polishing agent I have worked with."*



**Dr Alex Touchstone DDS  
Touchstone Dentistry**

*"DiaShine is absolutely the best all-purpose ceramic polishing material available. I could not see myself practicing without it."*



**Dr. Katie To**

*"When my patients smile, I smile. Thanks to DiaShine products I can keep my patients' smiling bright like diamonds. My secret? DiaShine Polish!"*

**Choose Your Kit — Expand Your Capabilities**

These complete finishing sets will support and expand your capabilities with any restoration. It will take you less time to achieve consistently superior results.



**DIASHINE® LAVA™ ULTIMATE  
FINISHING & POLISHING SYSTEM**

Reviewing the market, 3M™ ESPE™ decided to approach DiaShine to create a finishing system for their Lava Ultimate Restoratives. Used with our Benchmark Polish, this kit allows for a mirror-like finish for onlays, inlays or veneers in just four easy steps.



**AUGUST DEOLIVEIRA DDS  
FINISHING KIT**

DiaShine's first CAD/CAM finishing kit is a robust system for glass ceramics. Designed by Dr August DeOliveira, this kit offers you the ability to customise how you finish and polish any glass ceramics.



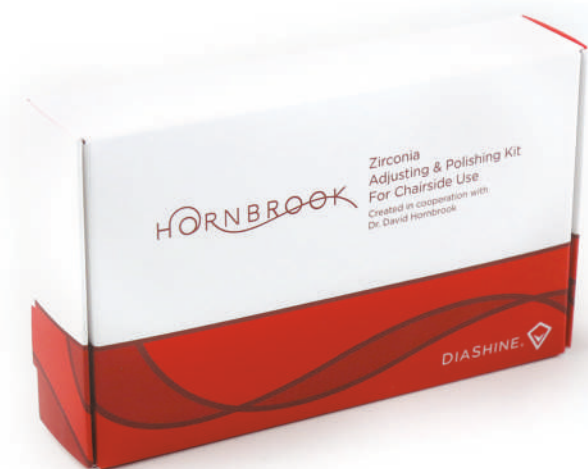
**August de Oliveira DDS  
Digital Enamel/  
Implants Made Easy**

*"I am constantly amazed with the finish I get when using DiaShine; it rivals any glazed restoration."*

**Dr. Josef Kunkela  
Kunkela Academy  
DSD Master**

*"I am extremely pleased with the August DeOliveira Finishing System, I use this kit in my Training Centre during hands-on practice."*





DAVID HORN BROOK  
ZIRCONIA POLISHING KIT



DAVID HORN BROOK LITHIUM  
DISILICATE POLISHING KIT

When one of the best in the business asked us to create a chair-side adjusting and finishing system for Zirconia and Lithium Disilicate, we gladly obliged. Voted one of the "Best Products of 2014", these kits have received a 95% rating by a prominent third-party testing facility.

**David Hornbrook DDS, FAACD, FACE  
Hornbrook Center for Dentistry**

*"Having the ability to polish ceramic after adjustment to a glaze-like finish not only enhances the aesthetics and wear compatibility, but also improves long term prognosis by eliminating surface micro fractures that can lead to premature ceramic failure and fracture. I have not found another polishing paste that even comes close to the results I achieve with Diashine."*



**CUSTOMISE YOUR KIT**

Your work, your way

Whatever you need, it's available. It's customizable. Tools that suit you best, for results that let the quality of your work shine. Toward that end, Diashine continues to develop new and better tools to help you work the way you want. So if you don't see it here on these pages, give us a call or send us a message and let us work with you.



LUSTRE KIT BY LINO ADOLF

Developed in collaboration with Lino Adolf, internationally recognised Dental Technician and Oral Design protégé, this finishing and polishing kit delivers fast, predictable, and natural-looking lustre on all ceramic restorations.

With a foundation in fixed prosthodontics education in Portugal and nearly three decades of experience across Europe and the UK, Lino has refined a workflow that combines precision, efficiency, and artistry. The Lustre Kit reflects this expertise, providing the ideal selection of Diashine compounds and rotary instruments for both chairside and laboratory use.

Whether for crown & bridge, implant work, or CAD/CAM restorations, the Lustre Kit ensures effortless adjustment and a high-gloss, enamel-like surface while preserving anatomy and texture.



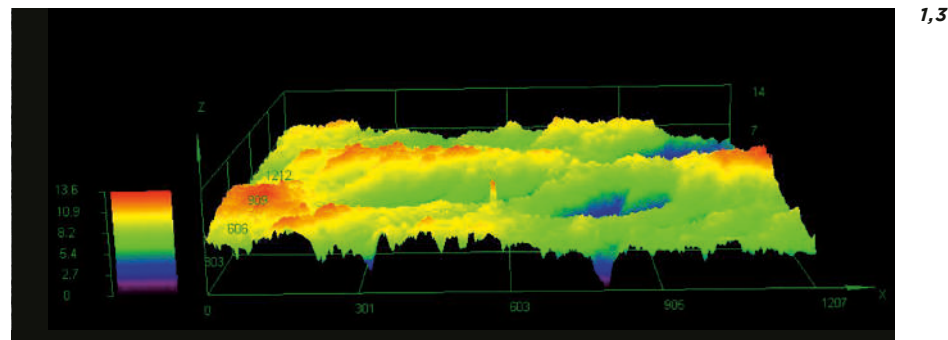
*"I've been using Diashine to hand-polish all of my restorations on the final stage of the work as well as in all the Academy's training. You are able to achieve a natural looking lustre very quickly. - Great product overall."*



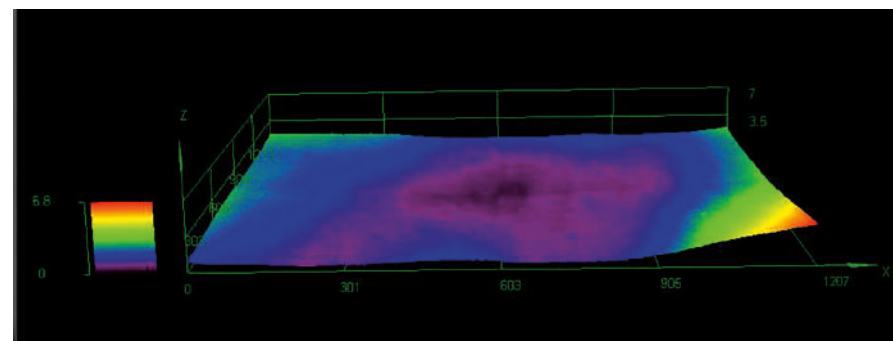
IVOCLAR VIVADENT TELIO® CAD  
RESTORATIVE & ABUTMENT  
FINISHING SYSTEM

This Telio CAD Finishing Kit allows for quick and efficient finishing of Ivoclar's temporary implant solutions, whether for a new abutment block, an existing bridge block or both. Also works with any PMMA material.

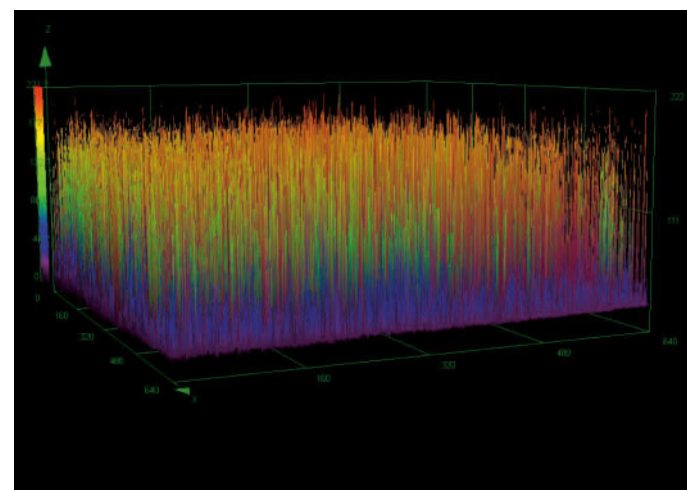
**Lino Adolf RDT  
Majestic Smile Ltd  
Dentsply Sirona Trainer  
Academy of Digital Dentistry**



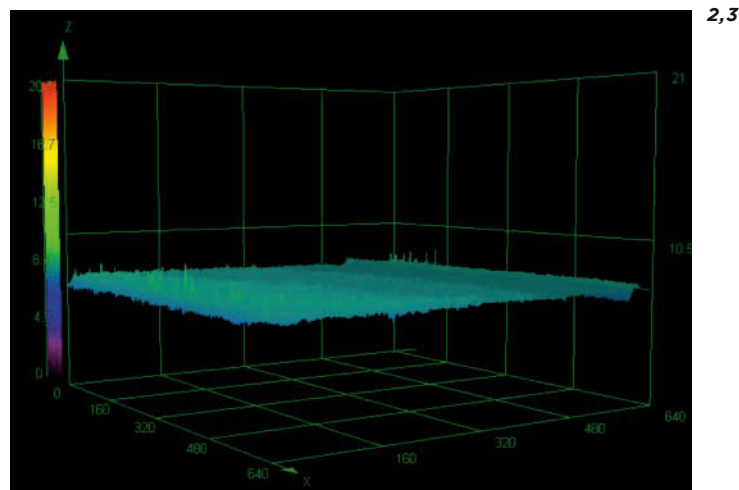
Lava Ultimate (3M™ ESPE™) after milling by diamonds in MCXL milling unit (Sirona Dental), before polishing.



Lava Ultimate (3M™ ESPE™) after polishing with the DiaShine Finishing System.



3D surface roughness of glazed e.max CAD. Vertical scale is 220 microns, 10X greater than polished surfaces. The surface roughness is very evident in the excessive quantity of peaks and valleys.

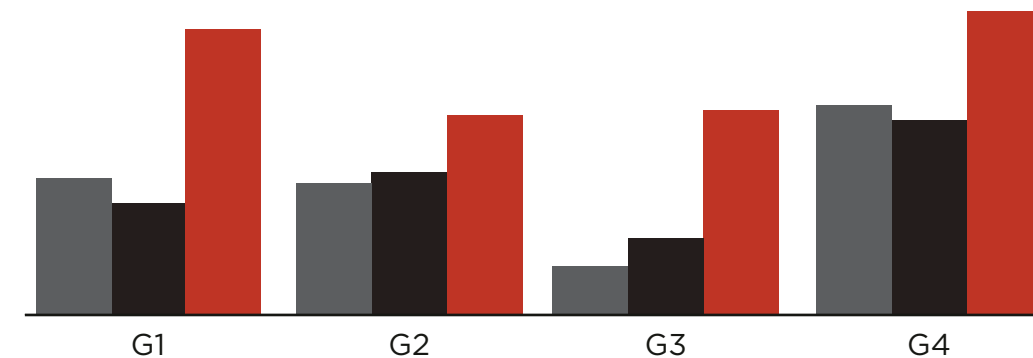


3D surface roughness of polished e.max CAD. Vertical scale is 20.9 microns and maximum surface defect is <8 microns. The surface smoothness is very evident in the lack of peaks and valleys.

1. University of Michigan School of Dentistry. DJ Fasbinder DDS & GF Neiva DDS MS. 15 July 2014. DATA ON FILE. 2. DeOliveira, August. "I Like Big Abutments and I Cannot Lie". Dentaltown. August 2014: 46 - 50. Print. 3. Images taken by Olympus LEXT OLS4000 3D Measuring Laser Microscope.

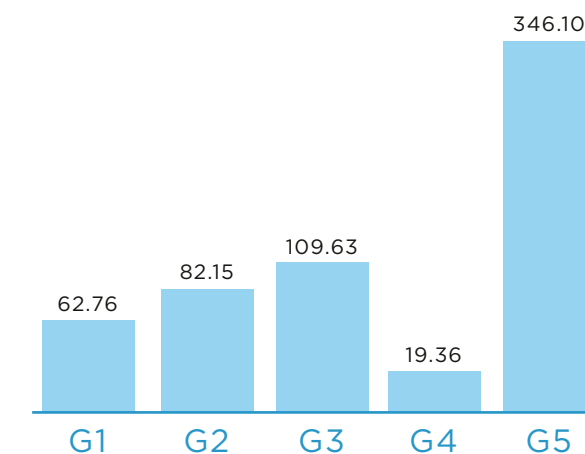
- G1 Sof-Lex Pre-Polishing Spirals  
Sof-Lex Diamond Polishing Spirals
- G2 Diatech ShapeGuard (pink + blue)
- G3 Diatech Polishing Rubbers  
DiaShine Polishing Compound  
Silicon Carbide Brush
- G4 Without finishing procedure (control group)

- Filtek Bulk Fill
- Z250
- Fill-UP



Effect of three finishing and polishing protocols in the surface roughness and color stability in different types of resins for restoring posterior teeth. 1.

- G1 Sof-Lex XT Discs (dark orange + light orange)  
Sof-Lex Pre-Polishing Spirals  
Sof-Lex Diamond Polishing Spirals
- G2 Sof-Lex Pre-Polishing Spirals  
Sof-Lex Diamond Polishing Spirals
- G3 SwissFlex Discs (blue + pink)  
Diatech ShapeGuard (pink + blue)
- G4 Sof-Lex XT Discs (dark orange + light orange)  
Enhance Multi Polishing Points  
Sof-Lex Diamond Polishing Spirals  
DiaShine Polishing Compound with felts  
Suede Discs
- G5 Without finishing procedure (control group)



Effect of different finishing and polishing protocols in the brightness and roughness of two composite resins. 1.

**Paulo Monteiro DMD, MSc**  
Instituto Superior de Ciências da Saúde Egas Moniz Portugal



"I use DiaShine's polishing products with confidence in my daily clinical practice. Not only from clinical experience but also corroborated by laboratory research, DiaShine's Intraoral polishing paste is my choice for direct restorations in composite resins. With only a small amount and in a few seconds you can achieve a natural, enamel-like shine outcome.z"

1. Monteiro P, Freitas A, Rua J, Mendes JJ, 2016, Instituto Superior de Ciências da Saúde Egas Moniz, Caparica, Portugal

### Ideal for Your Wheelhouse

These 22mm x 3mm sintered diamond rubber wheels reduce heat and chipping and work beautifully with light to moderate contact pressure at low speeds (10k max). Your choice of seven grits for any number of projects, they are ideal for all ceramics and may be used down to the mandrel.



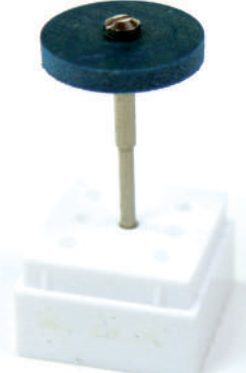
**DIAFLEX  
EXTRA FINE**  
Highest Shine



**DIAFLEX  
FINE**  
High Shine



**DIAFLEX  
MEDIUM FINE**  
Polishing & Smoothing



**DIAFLEX  
MEDIUM**  
Smoothing



**DIAFLEX  
MEDIUM COARSE**  
Smoothing &  
Light Reduction



**DIAFLEX  
COARSE**  
Reduction &  
Material Removal



**DIAFLEX  
EXTRA COARSE**  
Gross Reduction &  
Material Removal

### DiaFlex Dentist - Your Chairside Post-Adjustment Assistant

These RA-latch sintered diamond tools, in rubber or silicone, are ideal at low speeds. Able to be autoclaved, they are ready for use again and again. David Hornbrook Adjusting and Finishing kit refills are available for order.

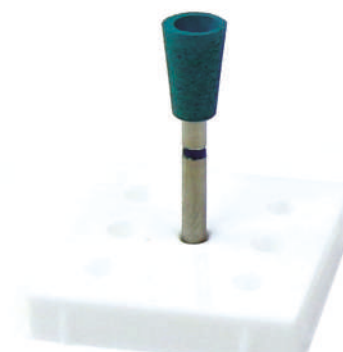
#### Medium Grit Sintered Diamond Rubber Pre-Polisher



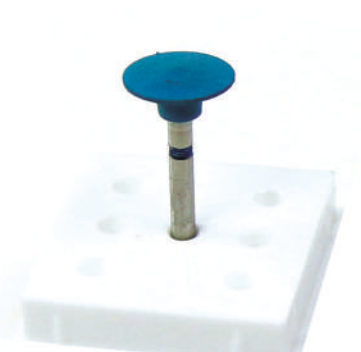
**DIAFLEX  
DFD700**  
Small Point



**DIAFLEX  
DFD701**  
Large Point



**DIAFLEX  
DFD702**  
Cup



**DIAFLEX  
DFD704**  
Disc

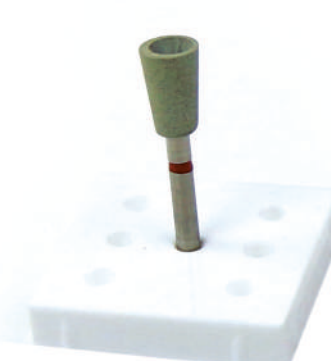
#### Fine Grit Sintered Diamond Rubber Polisher



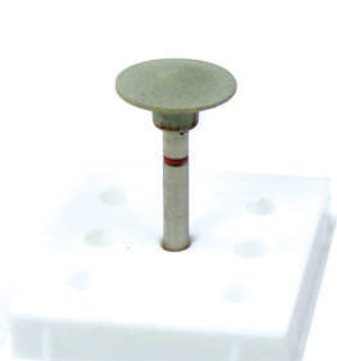
**DIAFLEX  
DFD710**  
Small Point



**DIAFLEX  
DFD711**  
Large Point

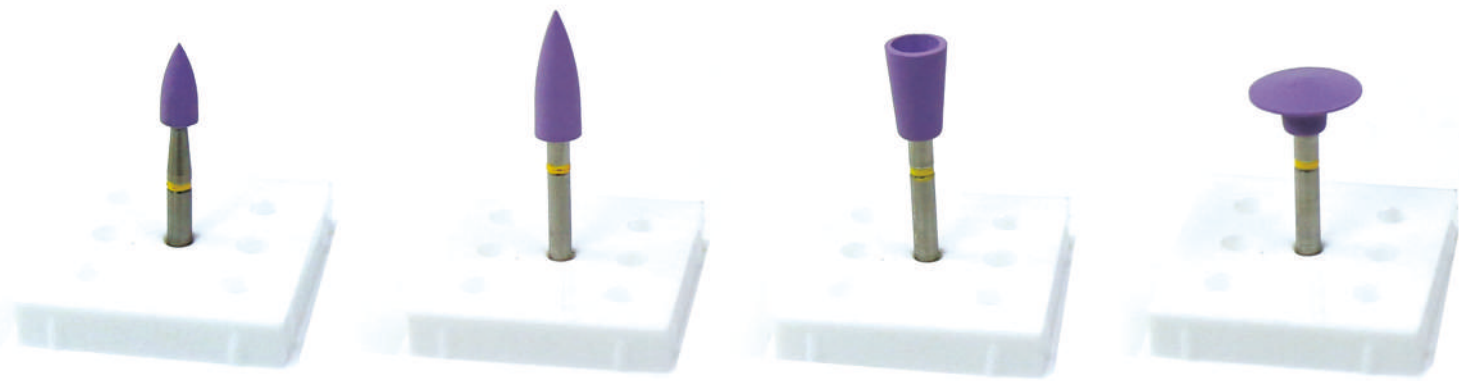


**DIAFLEX  
DFD712**  
Cup



**DIAFLEX  
DFD714**  
Disc

**Fine Grit Sintered Diamond Silicone Polisher**



DIAFLEX  
DFD954

Small Point

DIAFLEX  
DFD955

Large Point

DIAFLEX  
DFD960

Cup

DIAFLEX  
DFD964

Disc



**James Klim DDS, FAGD, FADFE, PC  
CADStar**

*"I am a big fan of DiaShine. It's something that I use every day in practice and it's also part of the finishing protocols for all our CEREC classes".*

**Greg Campbell DDS**



*"Your DiaFlex products are so easy to use. They make my job much easier, and teaching new users to get the ideal finish is a snap."*

**Dr. Alejandro Pineda**

*"I do full in-house digital dentistry, always giving time and dedication to the polishing stage, without modifying the surface texture, I found in Diashine the perfect combination, pastes, erasers and brushes, which improved the quality of my feldspar ceramic work and lithium disilicate. For 1 year also fiddling with printed resin-infiltrated ceramics with excellent results."*



**Angela Severance RDA CDD  
NINJA Dentistry  
CAD CAM Integration Specialist**

*"DiaShine® polishing paste is my go-to finishing product. It remits a highly aesthetic, luminescent finish to all chairside CAD CAM restorations and is unmatched by competitors in delivering consistent efficient results."*

**Von Grow DTG  
Dark Horse Dental Studio  
Dental Technicians Guild Founder**

*"DiaShine for me puts the final nail in all of my cases. It goes on smooth, and brings out the lustre like no other paste I have tried. Now I use the DiaShine Fine Soft for all of my cases!"*



**Mohammad Al-Zu'bi CDT, RDT  
Micro Dental Ottawa**

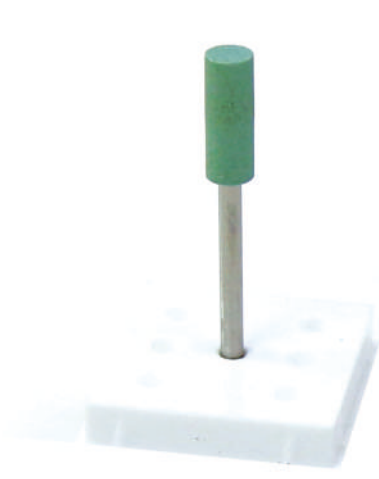
*"Part of my bench routine is to go over all restorations with DiaShine; there is absolutely no match for it in the market. I also appreciate the personalized service from VH Technologies"*

**DiaTrim - Fine Grinding and Contouring at Your Fingertips**

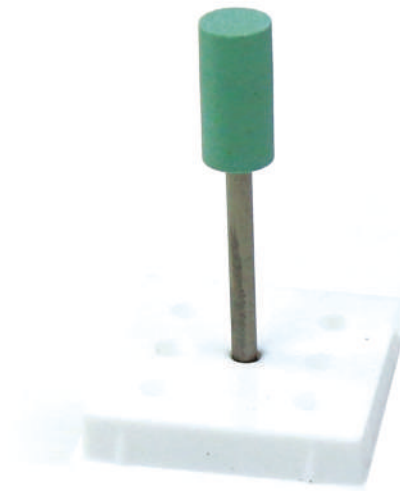
These SHP ceramic-bonded sintered diamond instruments are ideal for low-speed work on Zirconia, Lithium Disilicate or Lithium Silicate.



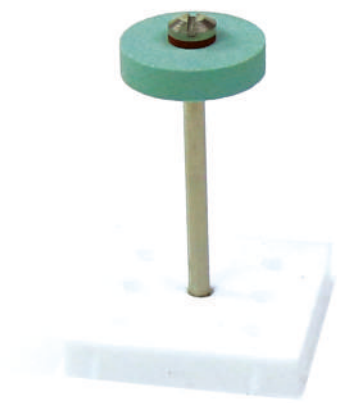
DIATRIM  
4MM CONE



DIATRIM  
4MM CYLINDER



DIATRIM  
6MM CYLINDER



DIATRIM  
15MM WHEEL



DIATRIM  
22MM DISC

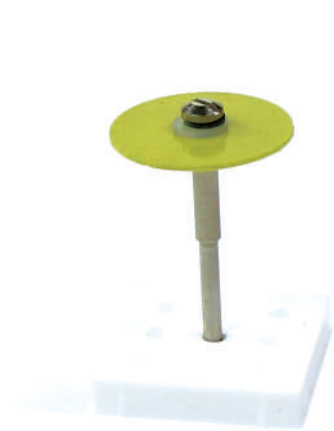


DIATRIM  
DTD905

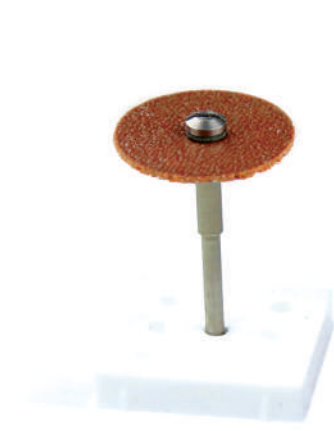
Latch Point for minor chair side adjusting.

**DiaThin - Your Sleek Alternative to DiaFlex**

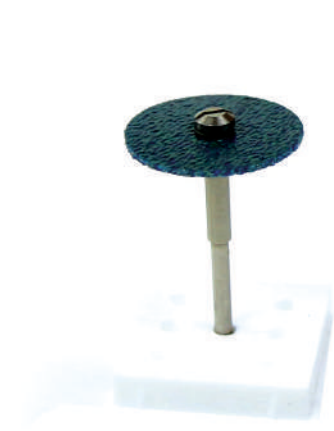
SHP flexible mesh-reinforced sintered diamond discs provide the ideal tool for interproximal smoothing and polishing. 22mm x 1mm.



DIATHIN FINE  
Polishing



DIATHIN MEDIUM  
FINE  
Pre-Polishing



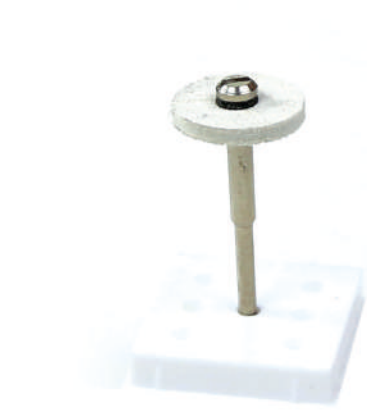
DIATHIN MEDIUM  
Smoothing/Pre-Polishing



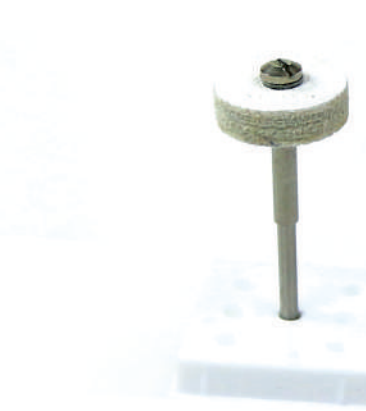
DIATHIN COARSE  
Smoothing

**CompoFlex - Your High Shine Choice**

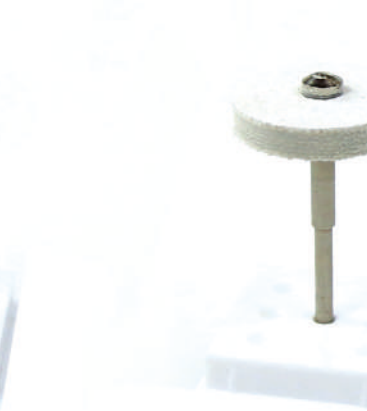
CompoFlex offers you a high shine for ceramics or metals with these long-lasting, layered cloth, rubber-reinforced sintered diamond wheels. Can be autoclaved.



COMPOFLEX 16/3  
16mm x 3 Layers



COMPOFLEX 16/6  
16mm x 6 Layers



COMPOFLEX 25/6  
25mm x 6 Layers

**SHP Rotary - The Perfect Companions to DiaShine® Polishing Compound**

These instruments have been specially selected for use with DiaShine polish. Whether you choose soft or stiff bristle brushes, natural hair or synthetic, these are just what you need for maximum effect.



**SOFT BRISTLE BRUSH**  
19mm Soft Bristle Goat Hair Brush



**MEDIUM BRISTLE BRUSH**  
19mm Medium Bristle Horse Hair Brush



**STIFF BRISTLE BRUSH**  
19mm Stiff Bristle Synthetic Brush



**OCCLUSO BRUSH**  
19mm Medium Bristle Horse Hair Pointed Occlusal Brush



**CHAMOIS CENTRE SOFT BRISTLE BRUSH 130-22**  
22mm Chamois Centre Soft Bristle Goat Hair Brush



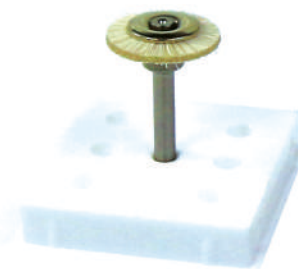
**CHAMOIS CENTRE MEDIUM BRISTLE BRUSH 130-32**  
22mm Chamois Centre Medium Bristle Horse Hair Brush



**COTTON BUFF**  
Full Cotton Head for post polish buffing

**RA Latch - Your Ideal Bristle-Brush Chairside Assistant**

Chosen specifically for use with Intra Oral DiaShine® polish, these single-use instruments offer a latch attachment for low-speed chairside polishing.



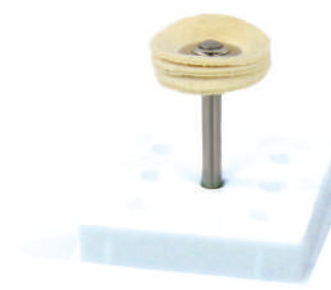
**100-12 ROUND**  
12mm Round Soft Bristle Goat Hair Single Use Brush



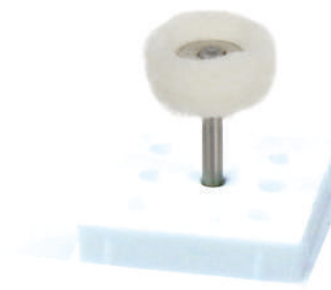
**100-08 CUP**  
8mm Cup Soft Bristle Goat Hair Single Use Brush



**120-04 POINTED**  
4mm Pointed Stiff Bristle Goat Hair Occlusal Single Use Brush



**160-14 Layered Chamois Wheel**  
14mm Round Tri Layer Micro Fibre Wheel. Single Use Wheel



**300-14 Layered Cotton Wheel**  
14mm Tri Layer Cotton Buff Polishing or post polish buffing Single Use Wheel

**Mike Small**  
Small Ceramics Dental Lab



*"I use DiaShine every day at my lab. Attention to surface texture and finish is extremely important when trying to replicate natural dentition. With DiaShine's wide variety of polishing pastes I can trust that I will achieve the natural finish I am looking for no matter what material the restoration."*



**John Nosti**  
FAGD, FACE, FICOI

*Without question Diashine is the best polishing material on the market for ceramics. It is always the final touch I perform when I insert an all ceramic smile design just prior to handing the patient the mirror. The wow factor in look and feel for ceramics is unsurpassed in dentistry.*

**Jim Thacker**  
VP - Utah Valley Dental Laboratory



*"We've used DiaShine for many years with great success. It allows us to create a natural luster to our restorations. It's easy to use and the intra-oral version allows our dentists to duplicate the lab shine in the mouth. Diashine gives our product that extra "pop" necessary to stay ahead of the competition!"*



**Mike Skramstad**  
Resident Faculty  
Cerec Doctors

*"I have been using DiaShine for a number of years and it is one of the best polishing agents I have ever used. It allows me to create a natural finish to my restorations without destroying the texture and characterization I worked so hard to put in. I cannot recommend DiaShine and VH Technologies more."*

**Gems & Jewelry**

Relatively new but gaining popularity in the jewelry and rock carving field, our products have been recommended time and time again in fields such as fire agate and opals. Contact us today to try out our sample pack.



**Ryszard Krukowski**  
Fire Agate Art Studio, British Columbia



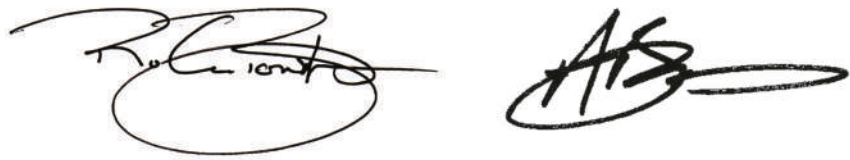
*"Having been working with gemstones for over 30 years, I have found that VH Technologies' DiaShine, DiaFlex, DiaThin and CompoFlex tools are the best on the market to finish and polish many gemstones, including carving Fire Agates. Very controllable sanding and rapid polishing - every carver's dream!"*

## A MESSAGE FROM ROLAND AND ANTHONY BONSER.

We know that when it comes to procuring the necessary finishing and polishing tools for your trade, there are other manufacturers you could choose. We are honored that so many of you have chosen DiaShine®/VH Technologies. This is no small thing and it is what keeps us constantly seeking out the best materials to use in manufacturing our products.

Your support has made DiaShine the benchmark brand throughout the dental industry. The brand of best practice. The brand of choice.

Thank you.





© VH Technologies LTD. All Rights Reserved. DiaShine is a registered trademark of VH Technologies LTD. 3M, ESPE and Lava are trademarks of 3M or 3M Deutschland GmbH. Used under license in Canada. [www.DiaShinePolish.com](http://www.DiaShinePolish.com)

[WWW.DIASHINEPOLISH.COM](http://WWW.DIASHINEPOLISH.COM)